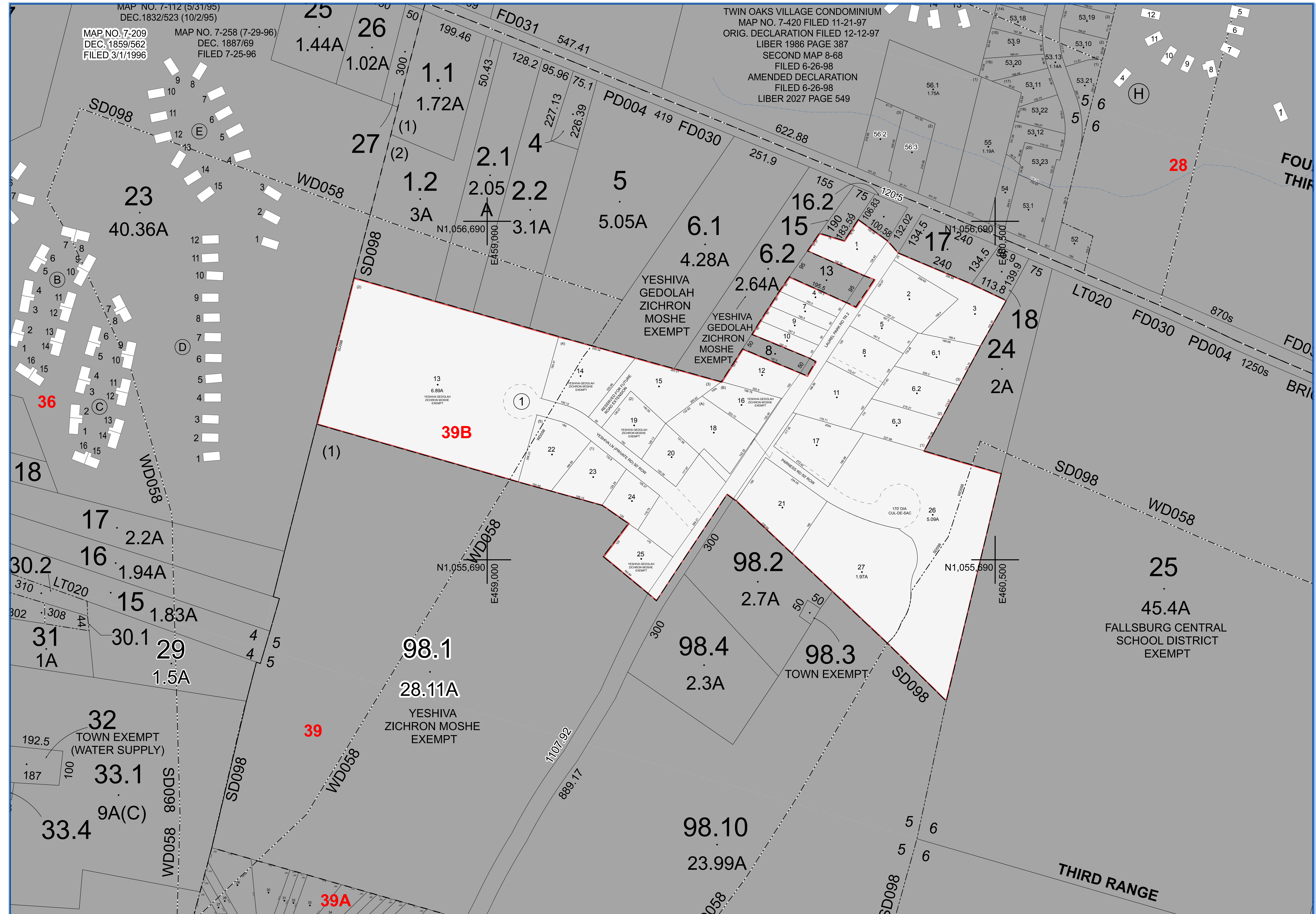


MAP NO. 7-209
DEC. 1859/562
FILED 3/1/1996

MAP NO. 7-258 (7-29-96)
DEC. 1887/69
FILED 7-25-96

TWIN OAKS VILLAGE CONDOMINIUM
MAP NO. 7-420 FILED 11-21-97
ORIG. DECLARATION FILED 12-12-97
LIBER 1986 PAGE 387
SECOND MAP 8-68
FILED 6-26-98
AMENDED DECLARATION
FILED 6-26-98
LIBER 2027 PAGE 549



SULLIVAN COUNTY
TAX MAP DEPARTMENT

FOR TAX PURPOSES ONLY
NOT TO BE USED FOR CONVEYANCE

LEGEND APPLIES ONLY TO THE
UNSHADED PORTION OF THE MAP

North American Datum 1983, New York East

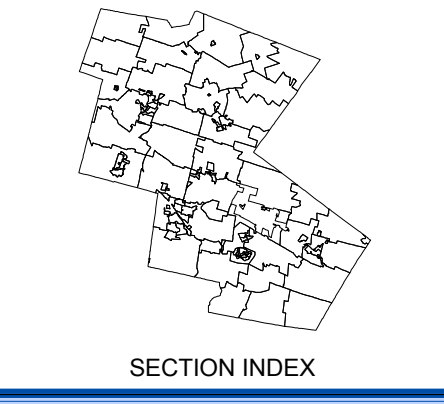
WEILER MAPPING
A DIVISION OF JAMES W. SEWELL COMPANY
100 North St. Monticello, NY 12701
Tel: 845-386-1100 Fax: 845-386-1101
www.weilermapping.com

Owned & Maintained by:
Office of Real Property Services
Sullivan County Government Center
100 North St. Monticello, NY 12701
Phone: (845) 807-0221

REVISION TABLE			
DATE	CHANGES	DATE	CHANGES
10/8/2010	Subdiv. 39 B-1-6 into 6.1, 6.2, 6.3		
5/7/2009	Converted into GIS format		

SPECIAL DISTRICTS					
TYPE	SYMBOL	NAME	ARL.M. NO.	TYPE	SYMBOL
SCHOOL	SCH	FALLSBURG	482801		
WATER	WD	FALLSBURG CONSOLIDATED WD	WD058		
SEWER	SD	FALLSBURG CONSOLIDATION SD	SD098		
PUBLIC PARKING	PD	FALLSBURG	PD004		
LIGHT	LT	FALLSBURG	LT020		

LEGEND	
SYMBOL	DESCRIPTION
---	TAX MAP BLOCK NO.
---	CITY TOWN OR VILLAGE LINE
---	BLOCK LIMIT
---	SPECIAL DISTRICT LINE
---	EASEMENT LINE
---	PROPERTY LINE
---	FILED PLAN LOT LINE
---	PATENT LINE
---	MATCH LINE
---	AREA (From Deed)
---	AREA (Calculated)
---	DIMENSION (From Deed)
---	DIMENSION (Scaled)
---	STREAM



TAX MAP
TOWN OF FALLSBURG
SULLIVAN COUNTY, NEW YORK

North American Datum 1983, State Plane New York East Feet

Photo No. 8-242-243-244 Date of Map 8/23/2005
Date of Photo 6/5/1984 Scale 1" = 100'
Section No. **39B**