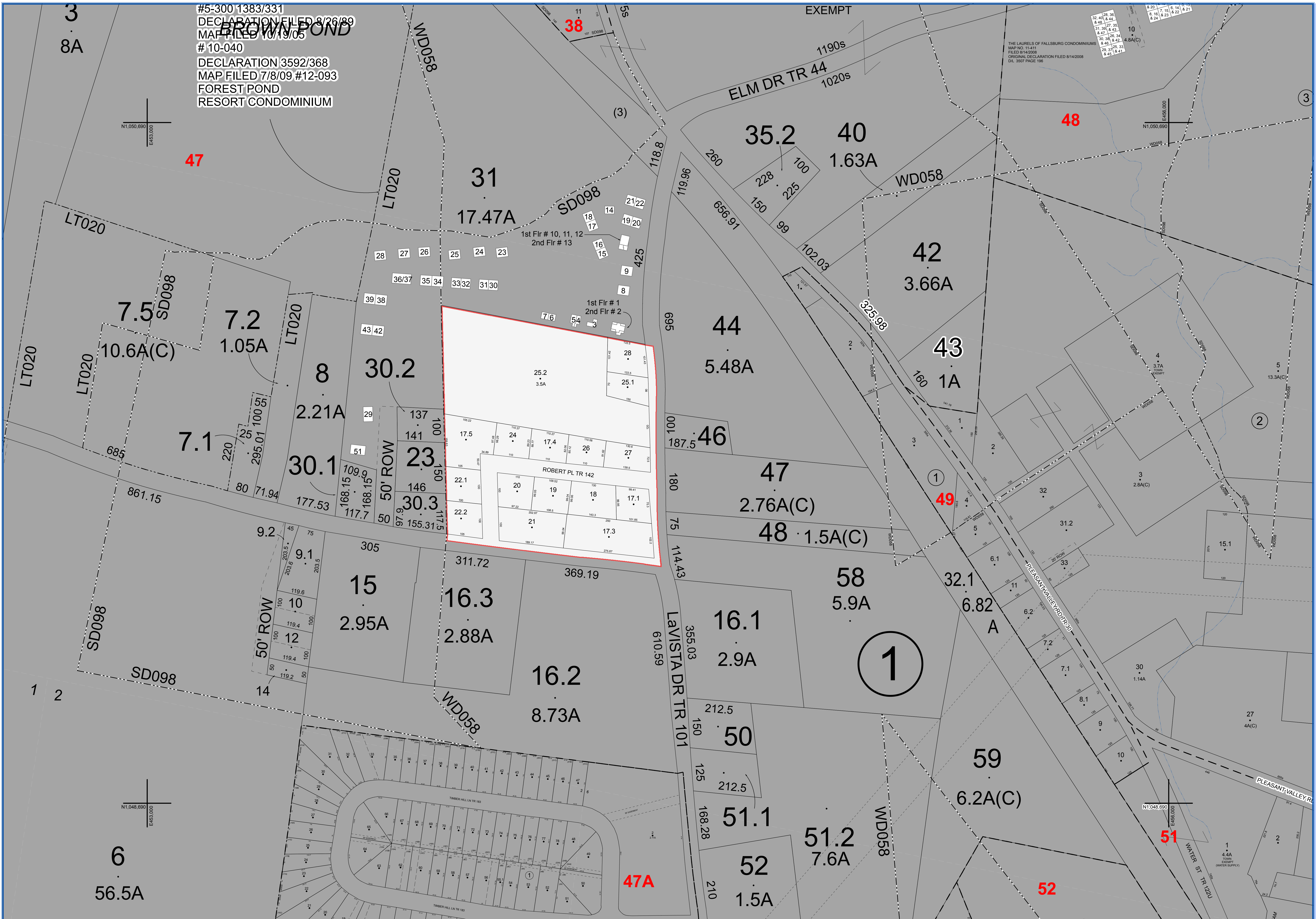


#5-300 1383/331
 DECLARATION FILED 8/26/89
 MAP FILED 10/19/05
 #10-040
 DECLARATION 3592/368
 MAP FILED 7/8/09 #12-093
 FOREST POND
 RESORT CONDOMINIUM

THE LAURELS OF FALLSBURG CONDOMINIUMS
 MAP NO. 11-411
 FILED 8/14/2008
 ORIGINAL DECLARATION FILED 8/14/2008
 DTL 3507 PAGE 196



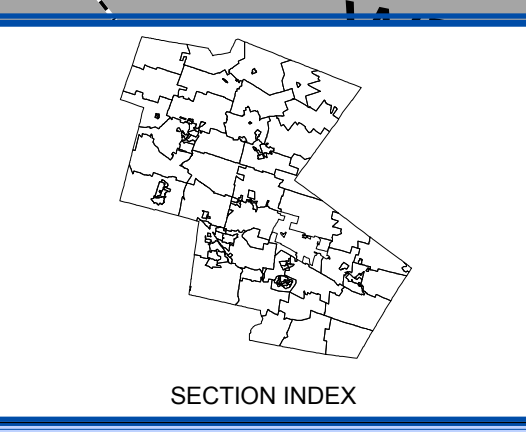
SULLIVAN COUNTY
 TAX MAP DEPARTMENT
 FOR TAX PURPOSES ONLY
 NOT TO BE USED FOR CONVEYANCE
 LEGEND APPLIES ONLY TO THE
 UNSHADED PORTION OF THE MAP
 North American Datum 1983, New York East

WEILER MAPPING
 A DIVISION OF JAMES W. SEWELL COMPANY
 100 NORTH ST. MONTICELLO, NY 12701
 TEL: 845-385-1141 FAX: 845-385-1142
 WWW.WEILERMAPPING.COM
 Owned & Maintained by:
Office of Real Property Services
 Sullivan County Government Center
 100 North St. Monticello, NY 12701
 Phone: (845) 807-0221

REVISION TABLE			
DATE	CHANGES	DATE	CHANGES
5/7/2009	Converted into GIS format		

SPECIAL DISTRICTS			
TYPE	SYMBOL	NAME	ARLNM NO.
SCHOOL	SCH	FALLSBURG	482901
GARAGE	GB	FALLSBURG	080175
WATER	WD	FALLSBURG CONSOLIDATED WD	WD058
SEWER	SD	FALLSBURG CONSOLIDATION SD	SD098
FIRE	FD	FALLSBURG	FD030
PUBLIC PARKING	PD	FALLSBURG	PD004
LIGHT	LT	FALLSBURG	LT020

LEGEND			
STATE OR COUNTY LINE	TAX MAP BLOCK NO.	FILED PLAN LOT NO.	(1)
CITY TOWN OR VILLAGE LINE	FILED PLAN BLOCK NO.	TAX MAP LOT NO.	(2)
BLOCK LIMIT	AREA (From Deed)	AREA (Calculated)	(3)
SPECIAL DISTRICT LINE	AREA (From Deed)	AREA (Calculated)	(4)
EASEMENT LINE	DIMENSION (From Deed)	DIMENSION (Scaled)	(5)
PROPERTY LINE	DIMENSION (From Deed)	DIMENSION (Scaled)	(6)
FILED PLAN LOT LINE	STREAM		
PATENT LINE			
MATCH LINE			



TAX MAP
TOWN OF FALLSBURG
 SULLIVAN COUNTY, NEW YORK
 North American Datum 1983, State Plane New York East Feet
 Photo No. 7-273-274 Date of Map 12/28/1995
 Date of Photo 6/5/1984 Scale 1" = 100'
 Section No. **47** INSERT B