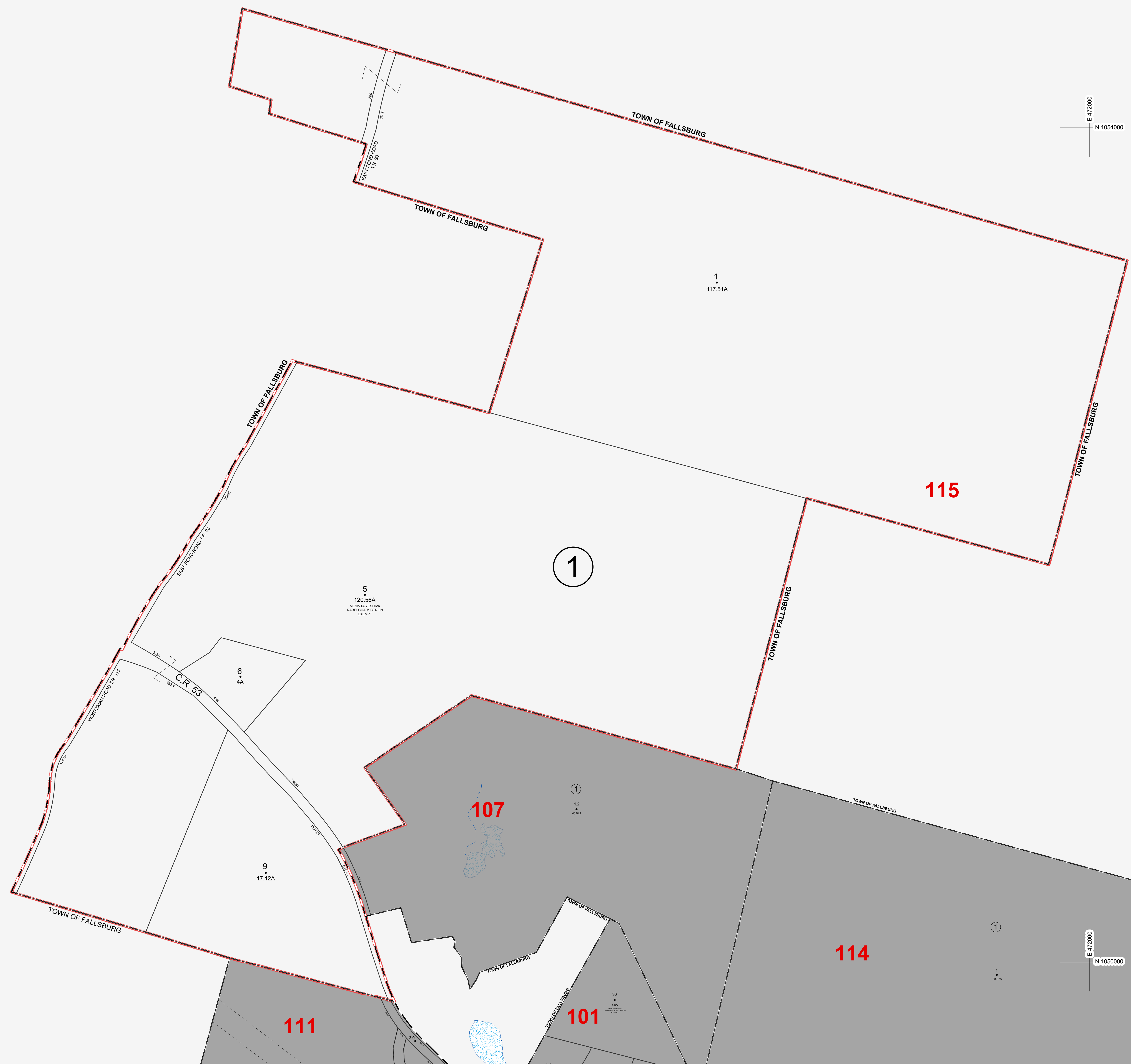


E 465000
N 1054000

E 472000
N 1054000

E 465000
N 1050000

E 472000
N 1050000



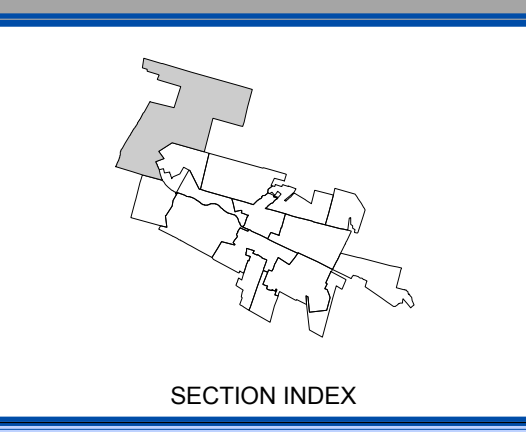
**SULLIVAN COUNTY
TAX MAP DEPARTMENT**
FOR TAX PURPOSES ONLY
NOT TO BE USED FOR CONVEYANCE
LEGEND APPLIES ONLY TO THE
UNSHADED PORTION OF THE MAP
North American Datum 1983, New York East

WEILER MAPPING
A DIVISION OF JAMES W. SEWELL COMPANY
100 N. 10th Street, Suite 101, Monticello, NY 12701
TEL: 845-752-0000 FAX: 845-752-0001
WWW.WEILERMAPPING.COM
Owned & Maintained by
Office of Real Property Services
Sullivan County Government Center
100 North St. Monticello, NY 12701
Phone: (845) 807-0221

REVISION TABLE			
DATE	CHANGES	DATE	CHANGES
3/7/2012	Combined 115-1-8 & 107-1-1 into 115-1-5		
5/5/2005			
9/24/1999			

SPECIAL DISTRICTS							
TYPE	SYMBOL	NAME	ARL.M. NO.	TYPE	SYMBOL	NAME	ARL.M. NO.
SCHOOL	SCH	FALLSBURG	482801				
FIRE	FD	WOODRIDGE FIRE DIST.	FD036				

LEGEND			
STATE OR COUNTY LINE	---	TAX MAP BLOCK NO.	(4)
CITY TOWN OR VILLAGE LINE	---	FILED PLAN LOT NO.	(15)
BLOCK LIMIT	---	FILED PLAN BLOCK NO.	(3)
SPECIAL DISTRICT LINE	---	TAX MAP LOT NO.	32
EASEMENT LINE	---	AREA (From Deed)	13.5A
PROPERTY LINE	---	AREA (Calculated)	14.2A(C)
FILED PLAN LOT LINE	---	DIMENSION (From Deed)	14
PATENT LINE	---	DIMENSION (Scaled)	27.5
MATCH LINE	---	STREAM	---



Tax Map
VILLAGE OF WOODRIDGE
SULLIVAN COUNTY, NEW YORK
North American Datum 1983, State Plane New York East
Photo No. 8,241,242,243 Date of Map 8/1/1995
Date of Photo 5/5/1994 Scale 1" = 200'
Section No. 115